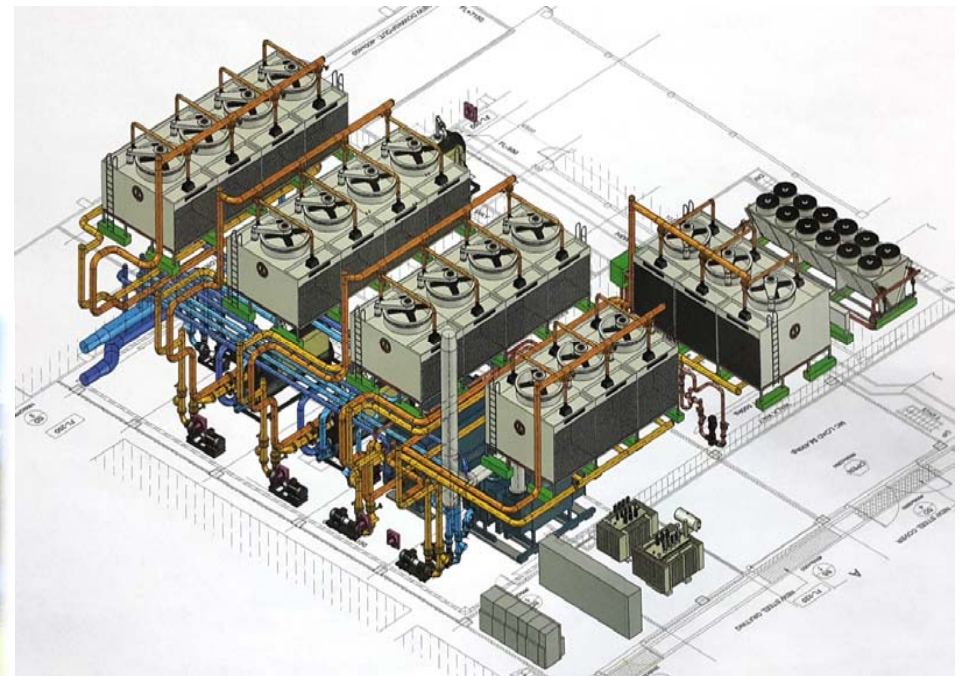


Honda : Tri-Generator Gas Engine 1x3.349 MWe Power Plant

GE Jenbacher gas engines and Tinamics Co., Ltd. And companies within the energy company Limited carry out the design, installation, adjustment, testing, including training usage in electrical systems and control systems, project value of approximately **13 million** baht, such as MV System (22 kV) LV system, control system and instrument, PLC / Scada and MDB panel, MCC panel, Cap Bank panel.



PROJECT : TRI-GEN. 1X3.349 MWE / HONDA / ROJANA / 2015

Honda : Tri-Generator Gas Engine 1x3.349 MWe Power Plant



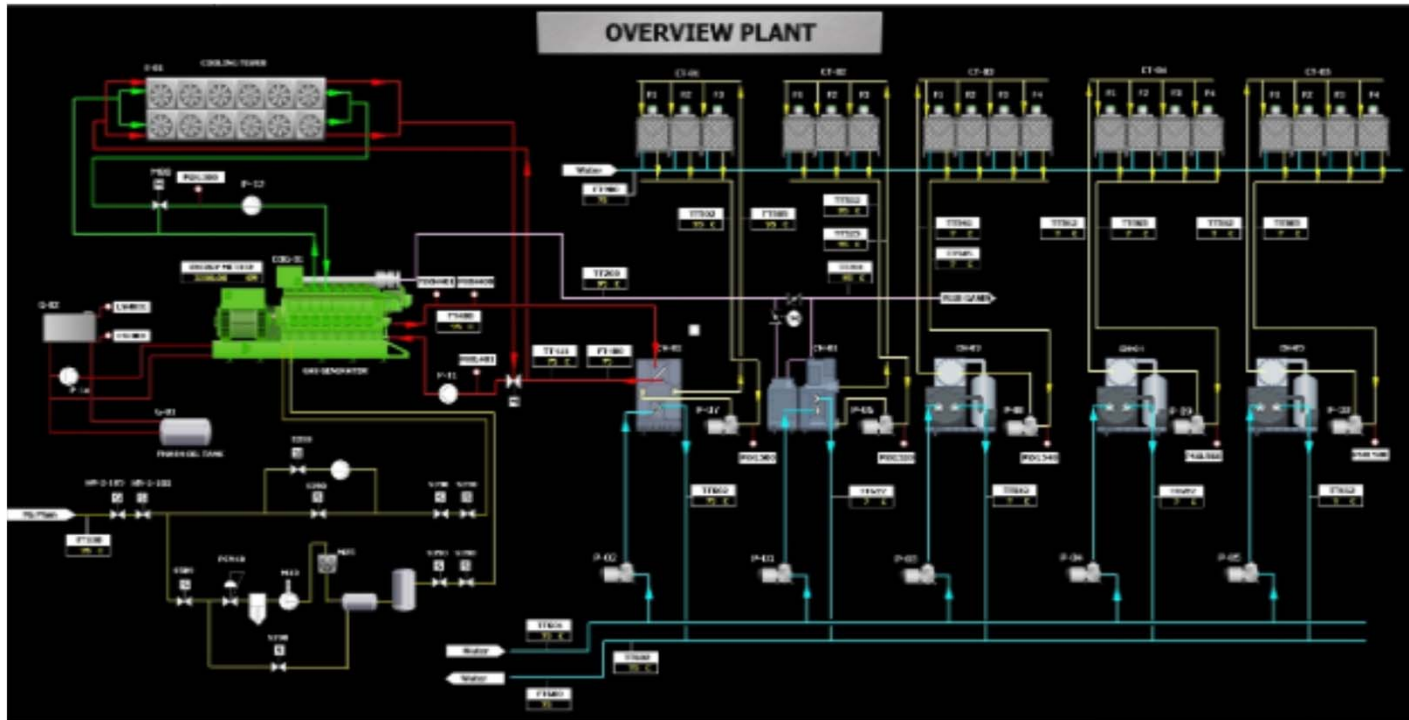
← Design, install MDB, MCC panel, install 22 kV MV cable

Installation, testing, testing and connection of AV systems (22 kV) →



← Installation of electrical power lines, LV System, Control & Instrument and Training.

Honda : Tri-Generator Gas Engine 1x3.349 MWe Power Plant



PLC / SCADA Is showing power plant usage Tri-Gen.1 x 3.349 Mwe.